

2018 VERMILLION COUNTY FAIR	CONTACT	PHONE
Queen & Princess Contests Sunday, June 10th 6:30 PM North Verm High School - \$5 Admission	2017 QUEEN RACHEL LUFT	2017 PRINCESS SARAH VOGES
OPEN Class Check-In Saturday, June 16 9 - NOON	Donna Farthing	765 492 3120
OPEN ARBA Rabbit Show Saturday, June 16 9 AM	Cathy Ping	618 584 3063
OPEN SWINE SHOW Saturday, June 16 11:AM	Lee Boling	765 366 0867
Baby Contest/Little Mr. & Miss, Junior Princess Contests Saturday, June 16 3:PM	Baylee Wilson	812 236 4416
IPA Sanctioned TRUCK AND TRACTOR PULL Saturday, June 16 5:PM	John Davern	765 505 1051
OPEN SHEEP SHOW Sunday, June 17 11:AM	Nikki Royer	812 243 2190
BARNYARD OLYMPICS Teams of 4 - Ages 8-12; 13-18; 19 & Up Monday, June 18 7:PM	GRAND STANDS	DONATION FOR ADMISSION
Red Dragon LAZER - TAG Tues. 6/19 & Wed 6/20 5:00 - 9:30 PM	AMUSEMENT AREA	FREE Provided by Verm Co Fair Board
Parade Wednesday, June 20 6:30 PM	Tim & Cindy Wilson	765 492 3704 / 4127
Youth Talent Show Wednesday, June 20 7:30 PM	Shelley Luft	812 249 0323
Carnival / Concessions	Tom Luft	812 249 2026
Jackpot Open Horse Show Saturday, July 28	Christy Uplinger Abby Luse	765 505 1975 765 761 8030
Open Pygmy Goat Show September 14 - 16	Debbie Chew	812 208 3192

OPEN CLASS BOOK Vermillion County Fair Cayuga, IN



Open Class Building
Open Daily 5:00-9:00 P.M.
Sunday 12:00 Noon- 9:00 P.M.
Vermillion County Fairgrounds
325 E Maple Street, Cayuga, IN

CONTENTS

GENERAL RULES	4
CRAFTS	5
Ceramics/Pottery/Glass	6
Christmas	
Construction Toys	
Decorated Clothing	
Household Crafts	7
Models	
Painting	
Puzzles	
Recycling	
Toys	8
Weaving	
Woodworking	
Misc.	
FANCY WORK	9
Counted Thread Embroidery	
Crochet	
Embroidery	10
Knitting	
Sewing	11
Quilts	
Misc.	
FINE ARTS	12
Acrylic	
Charcoal & Pastels	
Graphic Design	
Mixed Media	
Oils	
Pen & Ink	
Pencil	
Water Color	
FLORAL	13
Arrangements	
Cut Flowers	

PHOTO SALON DEPARTMENT

1. This exhibition is open to all amateur photographers (any photographer who does not derive an income from the sale of photos). Prints must be 5" x 7" or 8" X 10" and mounted on a 16" x 20" mat board, **1 photo per board**. Mount all prints securely. No framed photos or wood mounted photos will be accepted. Salon Photo Kits are available from the Extension office kits include a foam board, mat, and sleeve.
2. Limit two (2) photos to each section.

I. BLACK & WHITE OR SEPIA TONE

1. Landscape
2. Nature
3. Animal
4. Portrait
5. Sports
3. Animal
4. Portrait
5. Sports
6. Human Interest
7. Still Life
8. Misc.

CHAMPION& RES. BLACK & WHITE OR SEPIA TONE

II. COLOR

1. Landscape
2. Nature
8. Misc.-includes "trick" photography, montages, multiple exposures, etc tape the original photo on the back of exhibit.

CHAMPION & RES. COLOR

GRAND CHAMPION PHOTOGRAPHY

VEGETABLES

1. Beans, 10 pods
2. Beets with tops of approx. 1" or less, 5
3. Broccoli, 1 head
4. Cabbage, 1 head
5. Carrots with tops approximately 1/2" or less, 5
6. Cauliflower, 1 head
7. Celery, 1 bunch
8. Corn, 5 ears
9. Cucumbers, 5
10. Eggplant, 1
11. Kohlrabi, 5
12. Okra, 5 pods
13. Onions - 5
14. Parsnips, tops off, 5
15. Peppers, Bell type, 5
16. Peppers, Chili type (red or green), 5
17. Peppers, others, 5
18. Popcorn, new, 5 ears
19. Potato, Any Variety-5
20. Pumpkin, 1
21. Radishes, 5
22. Rutabaga, 1
23. Squash, 1
24. Sweet potatoes, all varieties, 5
25. Tomatoes, 5
26. Turnips, 5
27. Zucchini, 1
28. Most entries by one exhibitor
29. Most unusually shaped vegetable
30. Largest vegetable of it's kind
31. Most unusual veggie grown in Vermillion Co.
32. Misc.

CHAMPION & RES. VEGETABLE
GRAND CHAMPION GARDENING
RESERVE GRAND CHAMPION GARDENING

Potted Plants	14
Roadside Weeds	
FOOD PRESERVATION	14
Dried Foods	15
Fruits	
Jellies, Jams, & Preserves	16
Pickles & Relish	
Vegetables	
FOODS	17
Cakes	
Candy	18
Cookies	
Pies	
Starting From a Mix	
Quick Breads	19
Yeast Breads	
GARDENING/HERBS	20
Fruit	20
Herbs	21
Vegetables	22
PHOTO SALON DEPARTMENT	23
Black & White or Sepia Tone	
Color	

QUESTIONS ABOUT EXHIBITS CONTACT :
DONNA FARTHING 765-492-3120

REVISED IN 2015
VERMILLION COUNTY INDIANA
OPEN CLASS

All entries must be entered between 9:00 and 11:30 A.M. on the first Saturday of the fair. Building projects are to be entered. Entries will be judged that afternoon. Exhibits and premiums must be picked up the last Saturday of the fair between 9:00 and 11:00A.M.
The Open Class Building will be open daily from 5:00-9:00 P.M.; Sunday 12:00 Noon to 9:00 P.M.

Every precaution will be taken to insure the safety of all items, but in no case will the Fair Board be responsible for the loss or damage of articles.

Any entries left after will be disposed of at the discretion of the Fair Board. Ribbons will be awarded depending on workmanship and quality. Premiums: Grand Champ. \$5.00, Res. Grand Champ. \$4.00, Champion \$3.00, Res. Champ. \$2.00, 1st \$1.00, 2nd \$.50.

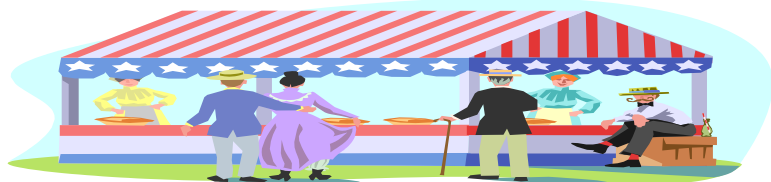
ONLY YOUR HIGHEST PLACING PER EXHIBIT WILL RECEIVE A PREMIUM.

There are **NO entry fees.**

**QUESTIONS ABOUT EXHIBITS
CONTACT :
DONNA FARTHING 765-492-3120**

GENERAL RULES

1. Exhibits must be made or grown by the person entering them or entered in the owner's name.
2. No more than 2 items per class per person will be accepted, in each category.
3. Items which have been previously exhibited at the Vermillion County Open Class will not be judged.
4. This exhibition is open to all amateurs (anyone who



HERB

EXHIBIT: A single pot containing one of the herbs listed below with a label of identification.

1. Basil (*Ocimum basilicum*) "all edible types"
2. Catnip (*Napeta cataria*) "all edible types"
3. Chamomile (*Chamaemelum nobile*) "all edible types"
4. Chives (*Allium schoenoprasum*) "all edible types"
5. Coriander or Cilantro (*Coriandrum sativum*)
"all edible types"
6. Dill (*Anethum graveolens*)
7. Lavender (*Lavendula sp.*) "all edible types"
8. Mint (*Mentha sp.*) "all edible types"
9. Oregano (*Origanum vulgare*)
10. Parsley (*Petroselinum crispum*) "all edible types"
11. Rosemary (*Rosemarinus officinalis*)
12. Sage (*Salvia officinalis*)
13. Sweet Marjoram (*Origanum majorana*)
14. Thyme(*Thymus vulgaris*)"all edible types"
15. Misc.

CHAMPION & RES. HERB

does not derive an income from the sale of exhibition items) this is to protect the integrity of our County Fair.

GARDENING

1. Produce must be grown by exhibitor
2. Only one exhibit per class per person
3. Plates for **garden projects** will be furnished.

FRUIT

1. Berries-6
2. Cantaloupe-1
3. Cherries-6
4. Grapes-a bunch
5. Muskmelon, full slip, well netted –1
6. Peaches-3
7. Rhubarb-6 stalks w/leaves
8. Watermelon, icebox type-1
9. Most entries by one exhibitor
10. Most unusually shaped fruit
11. Largest fruit of it's kind
12. Most unusual fruit grown in Vermillion Co
13. Misc.

CHAMPION & RES. FRUIT

5. You may include clear plastic to cover your items after judging.

6. **STATE FOOD SAFETY POLICY:**

Food Safety Rule for Foods Entered into County & Statewide Competitions: For baked product competitions: Filling, frosting, glazing, pie filling and meringue whether uncooked or cooked are not permitted to contain cream cheese, whipped cream , unpasteurized milk, uncooked eggs or egg whites (pasteurized eggs ore eggs cooked to 160* F. may be used). Home-canned fruits, vegetables or meats are not permitted in products. Recipes must be provided that show which ingredients were used in each part of the product.

CRAFTS

I. CERAMICS/POTTERY/GLASS

1. Molded (Green ware, etc.)
Objects must be well cleaned. All seams, if applicable, must be smooth with no rough edges.
2. Hand Built/Wheel Thrown
3. Modeling Clay/ Non-Ceramic
These exhibits are constructed from non-ceramic modeling compounds, which need to be baked in an oven. Examples: Sculpey Clay or Mod Magic.
4. Misc.

CHAMPION& RES.

CERAMICS/POTTERY/GLASS

II. CHRISTMAS

1. Wreaths
2. Tree Ornaments (set of 3)
3. Tree Skirt
4. Village Scenes
5. Candle
6. Stocking
7. Tree Top Decorations
8. Misc.

CHAMPION & RES. CHRISTMAS

III. CONSTRUCTION TOYS

The Construction Toy project allows exhibitor to create projects with Legos, K-Nex, Construx, Erector Sets, Tinker Toys, Lincoln Logs, Duplo blocks, etc. Exhibit may be of any design. Blocks may be glued together, but isn't mandatory. Remember the exhibit must be transported and moved to display area. You may want to consider how well your project holds/stays together.

CHAMPION& RES. CONSTRUCTION TOYS

IV. DECORATED CLOTHNG

1. Painted
2. Sewn Appliqué
3. Iron-on Appliqué
4. Quilted
5. Cross-stitch
6. Misc.

CHAMPION& RES. DECORATED CLOTHNG

VI. QUICK BREADS

1. Bran
2. Fruit & nut
3. Vegetable
4. Muffins, any kind, 6
5. Machine
6. Coffee Cakes
7. Enhanced Box Mix

CHAMPION & RES. QUICK BREADS

VII. YEAST BREADS

1. White
2. Whole Wheat
3. Cinnamon Raisin
4. Fancy Yeast Bread
5. Light Yeast Rolls (6)
6. Other Cheese, Honey, etc.
7. Machine
8. Enhanced Box Mix

CHAMPION & RES. YEAST BREADS

VIII. MISC. FOODS

CHAMPION & RES. MISC. FOODS

GRAND CHAMPION FOODS ***RESERVE GRAND CHAMPION FOODS***

II. CANDY (6 pieces)

1. Fudge
2. Divinity
3. Toffee
4. Misc.

CHAMPION & RES. CANDY

III. COOKIES (6)

1. Rolled
2. Dropped
3. Bar
4. Pressed
5. Novelty
6. Enhanced Box Mix
7. No Bake
8. Misc.

CHAMPION & RES. COOKIES

IV. PIES

1. Berry
2. Pecan
3. Cherry
4. Raisin
5. Peach
6. Apple
7. Misc.

CHAMPION & RES. PIES

V. STARTING FROM A MIX

1. Cake
2. Cookies (6)
3. Bread
4. Other

CHAMPION & RES. STARTING FROM A MIX

V. HOUSEHOLD CRAFTS

1. Decorated/w Artificial Flowers
2. Refrigerator Magnets
3. Wreaths
4. Potholders
5. Beaded or Button items
6. Hoop Pictures
7. Wood Burning items
8. Plastic Canvas items
9. Decoupage
10. Etched items
11. Hooked or Latch Hook Rugs
12. Misc.

CHAMPION& RES. HOUSEHOLD CRAFTS

VI. MODELS

A Model is; a “to-scale” replica. Kits may be used.

CHAMPION& RES. MODELS

VII. PAINTING (on any surface)

1. Hand Painting
2. Toile
3. Folk Art
4. Liquid Embroidery
5. Stenciling
6. Misc.

CHAMPION & RES. PAINTING

VIII. PUZZLES

All puzzles must be glued and framed.

CHAMPION & RES. PUZZLES

IX. RECYCLING

Please include description of what item was and what it is now. Any item made from recycled materials.

CHAMPION& RES. RECYCLING

X. TOYS

1. Stuffed Animals
2. Stuffed Dolls
3. Dolls, any other
4. Wood items
5. Misc

CHAMPION& RES. TOYS

XI. WEAVING

1. Baskets
2. Macramé
3. Woven Cloth
4. Hand Spun Yarn
5. Misc.

CHAMPION & RES. WEAVING

XII. WOODWORKING

1. Boxes
2. Benches
3. Refinished items
4. Carved items
5. Plaques
6. Misc.

CHAMPION & RES. WOODWORKING

XIII. MISC. CRAFT

CHAMPION& RES. MISC. CRAFT

GRAND CHAMPION CRAFTS *RESERVE GRAND CHAMPION CRAFTS*

FOODS

Recipe Card **MUST Be With Entry**

Baking entries must be made from scratch, no mixes except for mix category. Each entry **must** be accompanied by a printed recipe card. The card will be used by the judge and will be displayed during the fair and will be returned at checkout time. Exhibit baking items on disposable display board. Baked entries will be sold at the food auction, unless specified by exhibitor not to be sold. Those exhibits should be picked up immediately after judging. Proceeds from the auction will be used for champion premiums.

STATE FOOD SAFETY POLICY:

Food Safety Rule for Foods Entered into County & Statewide Competitions: For baked product competitions: Filling, frosting, glazing, pie filling and meringue whether uncooked or cooked are not permitted to contain cream cheese, whipped cream, un-pasteurized milk, uncooked eggs or egg whites (pasteurized eggs or eggs cooked to 160* F. may be used). Home-canned fruits, vegetables or meats are not permitted in products. Recipes must be provided that show which ingredients were used in each part of the product.

I. CAKES

1. Angel Food, Sponge, or Chiffon-no frosting
2. German Chocolate (with Topping) or Devil's Food-Chocolate iced
3. Loaf Cake-Pound, Gingerbread, Applesauce, Sour Cream, Chocolate Fudge
4. Decorated Cake
5. Enhanced Box Mix
6. Misc – White, Yellow, other Spice; must be frosted

CHAMPION & RES. CAKES

CHAMPION & RES.

JELLIES, JAMS, & PRESERVES

IV. PICKLES & RELISH (pints or ½ pint jars)

1. Vegetable Relish (Corn, Pepper, etc.)
2. Pickle Relish
3. Sweet Pickles
4. Dill Pickles
5. Pickled Vegetables
6. Lime Pickles
7. Refrigerator Pickles
8. Pickled Beets
9. Salsa
10. Freezer Relish
11. Misc.

CHAMPION & RES. PICKLES & RELISH

V. VEGETABLES (Quarts or pint jars)

1. Green Beans
2. Tomatoes – whole
3. Tomato Juice
4. Carrots
5. Beets
6. Mixed Vegetables
7. Corn
8. Misc.

CHAMPION & RES. CANNING VEGETABLES

VI. MISC. FOOD PRESERVATION

CHAMPION & RES. FOOD PRESERVATION

GRAND CHAMPION FOOD PRESERVATION
RES GRAND CHAMPION FOOD
PRESERVATION

FANCY WORK

I. COUNTED THREAD EMBROIDERY

1. Counted Thread Embroidery
(Under 100 sq inches)
 - A. Framed
 - B. Any other item
2. Counted Cross Stitch (Over 100 sq inches)
 - A. Framed
 - B. Any other item
3. Duplicate Stitch, any item
4. Huck or Swedish Weaving
5. Smocking
6. Special Stitches
7. Tatting
8. Misc.

CHAMPION & RES.

COUNTED THREAD EMBROIDERY

II. CROCHET

1. Afghan
2. Baby Sweater or set
3. Doily, any size
4. Hat, Slippers, Socks or Scarf
5. Stole, Poncho, or Cape
6. Sweater, Blouse, or Vest
7. Tablecloth
8. Baby Afghan
9. Collars
10. Lace
11. Doll and/or garment
12. Crocheted Doll
13. Child's Garment
14. Crocheted Outfit
15. Rug
16. Misc.

CHAMPION & RES. CROCHET

III. EMBROIDERY

1. Crewel Embroidery
2. Basic Embroidery
3. Ribbon
4. Canvas
5. Machine
6. Candle Wicking
7. Misc.

CHAMPION & RES. EMBROIDERY

IV. KNITTING

1. Stole, Poncho, or Cape,
2. Sweater, Blouse or Vest
3. Baby Sweater or set
4. Afghan
5. Hat, Slippers, Socks, or Scarf
6. Machine knitting
7. Lace
8. Baby Afghan
9. Doily, any size
10. Tablecloth
11. Collars
12. Child's Garment
13. Knitted Outfit
14. Knitted Doll Garment
15. Knitted Doll
16. Rug
17. Misc.

CHAMPION & RES. KNITTING

V. SEWING

1. Men's Clothing
2. Women's Clothing
3. Baby's Clothing
4. Boy Child's Clothing

1. Exhibits usually will not be judged by tasting; visual inspection will be used for the most part. Jars may need to be opened, however, when spoilage is suspected or differences among entries are very small.
2. Dried foods may be handled by judges to determine stage of doneness.
3. Dried foods should be displayed in appropriate storage containers (glass jars with rust-free lids, heavy-weight plastic food-quality bags, vacuum-sealed plastic food bags, etc.).

I. DRIED FOODS

1. Dried Fruits
2. Dried Fruit Leather
3. Dried Vegetables
4. Dried Herbs
5. Dried Jerky
6. Dried Meats
7. Dried Misc.

CHAMPION DRIED FOODS

II. FRUITS (Quarts or pint jars)

1. Peaches
2. Apples
3. Pears
4. Cherries
5. Misc.

CHAMPION CANNING FRUITS

III. JELLIES, JAMS, & PRESERVES

(standard jelly or ½ pint jar)

1. Blackberry or Raspberry Jelly
2. Blackberry or Raspberry Jam
3. Apple Jelly
4. Grape Jelly
5. Strawberry Jam
6. Freezer Jam
7. Preserves
8. Misc.

III. POTTED PLANTS indoor/outdoor

1. Potted Plant, non-blooming
2. Potted Plant, blooming
3. Terrarium
4. Misc.

CHAMPION& RES. POTTED PLANTS

IV. ARRANGEMENT OF ROADSIDE WEEDS

1. Dried Arrangement
2. Painted
3. Unpainted
4. Misc.

CHAMPION & RES. ROADSIDE WEEDS

V. MISC. FLORAL

CHAMPION & RES. MISC. FLORAL

GRAND CHAMPION FLORAL

RESERVE GRAND CHAMPION FLORAL

FOOD PRESERVATION

Food Preservation entries must be strictly “homemade”, correctly sealed and labeled and must have been packed after the last fair. Jars may be opened at the discretion of the judge. In the event a jar has to be opened by the judge, an identical jar may be exchanged at the end of the judging. All fruits and vegetables must be shown in standard quart or pint canning jars; jellies and jams must be shown in standard jelly jars with lids or ½ pint jars.

NO PARAFFIN.

1. All entries must have been preserved within the last year (12 months). If fresh produce is used, the exhibit should have been preserved within the last growing season.
2. Exhibits must be labeled with the name of the food, the date preserved, and the method of food preservation. Entries without required labeling will not be judged. If the food is canned, the label must state whether the food was hot or raw packed, boiling water or pressure canned, the process time, and the pounds of pressure if pressure-canned. The entry should also be accompanied by the recipe used. (A judge needs to know if the proper amount of citric acid, lemon juice or vinegar has been added to canned tomatoes, for example.)

V. SEWING CONT.

5. Girl Child’s Clothing
6. Quilted Clothing
7. Craft Sewing
8. Misc.

CHAMPION & RES. SEWING

VI. QUILT (Hand or Machine)

I. Hand

1. Quilts from whole cloth
2. Pieced Quilts
3. Appliquéd Quilts
4. Embroidered Quilts
5. Baby Quilt
6. Wall Hanging & Misc.

II. Machine

1. Quilts from Whole Cloth
2. Pieced Quilts
3. Appliquéd Quilts
4. Embroidered Quilts
5. Baby Quilt
6. Wall Hanging & Misc.
7. Crazy Quilt Items

III. Old Quilts (Exhibit only, please date)

CHAMPION & RES. QUILT

VII. MISC. FANCY WORK

CHAMPION& RES. MISC. FANCY WORK

GRAND CHAMPION FANCY WORK

RESERVE GRAND CHAMPION

FANCY WORK

FINE ARTS

In the **fine arts** exhibits, entries do not necessarily have to be on canvas, but they **must be framed and wired for hanging**. All entries must be original, no copies.

No saw-toothed hooks.

I. ACRYLIC

RES. CHAMPION & CHAMPION ACRYLIC

II. CHARCOAL AND PASTELS

CHAMPION & RES. CHARCOAL AND PASTELS

III. GRAPHIC DESIGN

(computer art, commercial art, advertising, etc.)

CHAMPION & RES. GRAPHIC DESIGN

IV. MIXED MEDIA (use of two or more media)

CHAMPION & RES. MIXED MEDIA

V. OIL

CHAMPION & RES. OILS

VI. PEN AND INK

CHAMPION & RES. PEN AND INK

VII. PENCIL

CHAMPION & RES. PENCIL

VIII WATER COLOR

CHAMPION & RES. WATER COLOR

IX. MISC. FINE ARTS

CHAMPION & RES. MISC. FINE ARTS

GRAND CHAMPION FINE ARTS

RES. GRAND CHAMPION FINE ARTS

FLORAL

Potted **plants** and **flowers** are to be in suitable containers. All specimen roses are to have at least 6” stems except for miniatures. Flowers must be grown by exhibitor. Place name on bottom of container.

I. ARRANGEMENTS

1. Petunias, any variety
2. Marigolds
3. Daisies, any variety
4. Nasturtiums
5. Asters
6. Roses
7. Snapdragons
8. Garden Flowers
9. Baby Zinnias
10. Sweet Peas
11. Zinnias
12. Misc.

CHAMPION & RES. ARRANGEMENTS

II. CUT FLOWERS

1. Rose, 1 specimen
2. Gladiolus, 1 specimen
3. Dahlia, 1 specimen
4. Marigold, 1 specimen
5. Zinnias, 1 specimen
6. Lily, 1 specimen any variety
7. Hollyhock, 1 specimen
8. Sunflower, any variety
9. Miniature Roses, any color
10. Misc.

CHAMPION & RES. CUT FLOWERS